

# Region 4 Middle School All-Region Scales

Flute

1. C Concert Scale

Musical notation for the C Concert Scale in 4/4 time. The scale is written on a single staff in treble clef. It begins with a C4 quarter note, followed by an ascending eighth-note scale: D4, E4, F4, G4, A4, B4, C5. The final C5 is held for a full measure. A slur covers the entire scale.

2. F Concert Scale

Musical notation for the F Concert Scale in 4/4 time. The scale is written on a single staff in treble clef with one flat in the key signature. It begins with an F4 quarter note, followed by an ascending eighth-note scale: G4, A4, Bb4, C5, D5, E5, F5. The final F5 is held for a full measure. A slur covers the entire scale.

3. Bb Concert Scale

Musical notation for the Bb Concert Scale in 4/4 time. The scale is written on a single staff in treble clef with two flats in the key signature. It begins with a Bb4 quarter note, followed by an ascending eighth-note scale: C5, D5, Eb5, F5, G5, Ab5, Bb5. The final Bb5 is held for a full measure. A slur covers the entire scale.

4. Eb Concert Scale

Musical notation for the Eb Concert Scale in 4/4 time. The scale is written on a single staff in treble clef with three flats in the key signature. It begins with an Eb4 quarter note, followed by an ascending eighth-note scale: F4, G4, Ab4, Bb4, C5, D5, Eb5. The final Eb5 is held for a full measure. A slur covers the entire scale.

5. Ab Concert Scale

Musical notation for the Ab Concert Scale in 4/4 time. The scale is written on a single staff in treble clef with four flats in the key signature. It begins with an Ab4 quarter note, followed by an ascending eighth-note scale: Bb4, C5, D5, Eb5, F5, G5, Ab5. The final Ab5 is held for a full measure. A slur covers the entire scale.

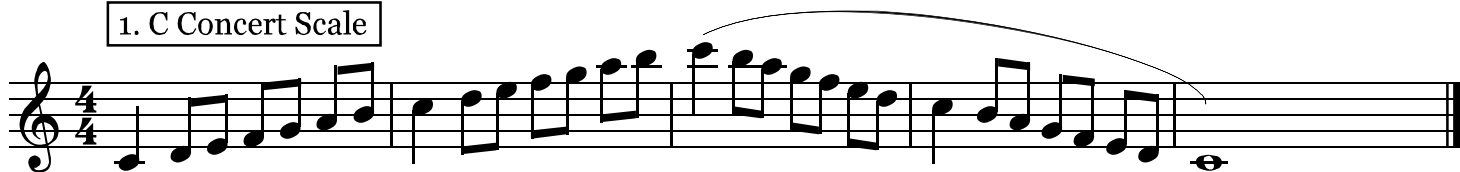
6. Chromatic Scale

Musical notation for the Chromatic Scale in 4/4 time. The scale is written on a single staff in treble clef with one flat in the key signature. It begins with an F4 quarter note, followed by an ascending chromatic scale: F#4, G4, Ab4, Bb4, C5, C#5, D5, Eb5, F5, F#5, G5, Ab5, Bb5, C6. The final C6 is held for a full measure. A slur covers the entire scale.

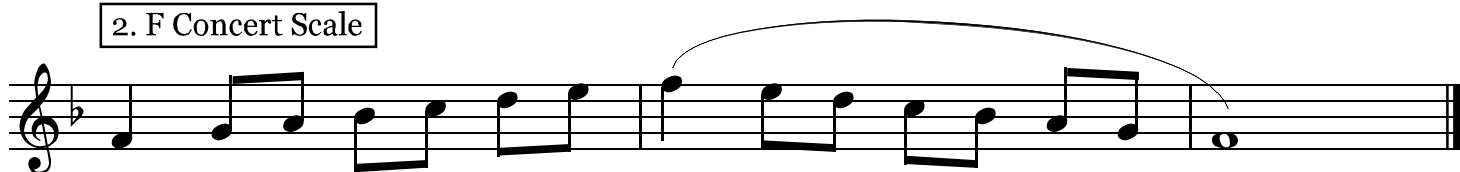
# Region 4 Middle School All-Region Scales

Oboe

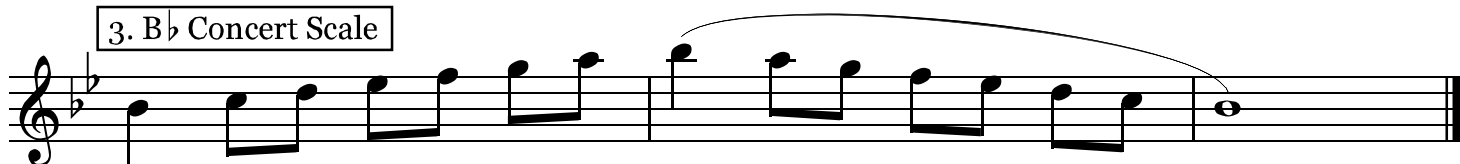
1. C Concert Scale



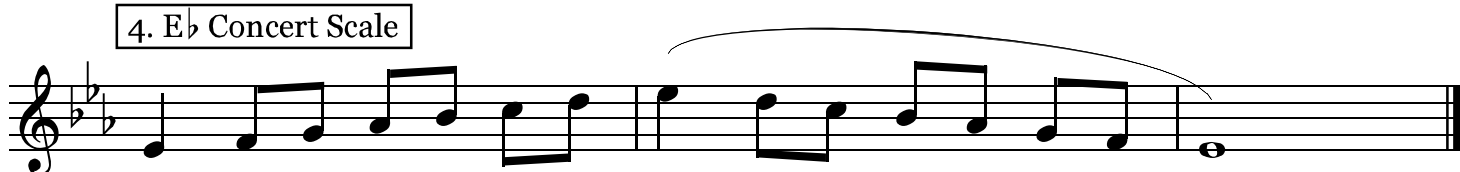
2. F Concert Scale



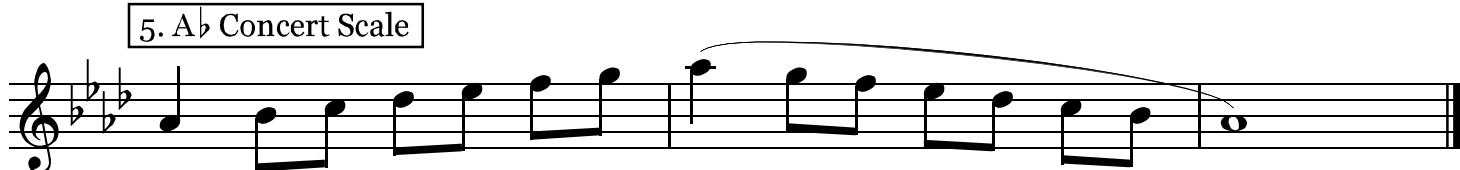
3. B $\flat$  Concert Scale



4. E $\flat$  Concert Scale



5. A $\flat$  Concert Scale



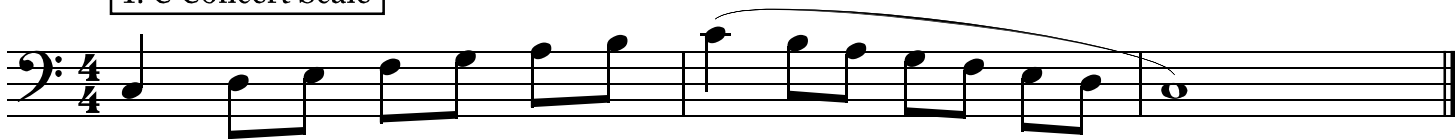
6. Chromatic Scale



# Region 4 Middle School All-Region Scales

## Bassoon

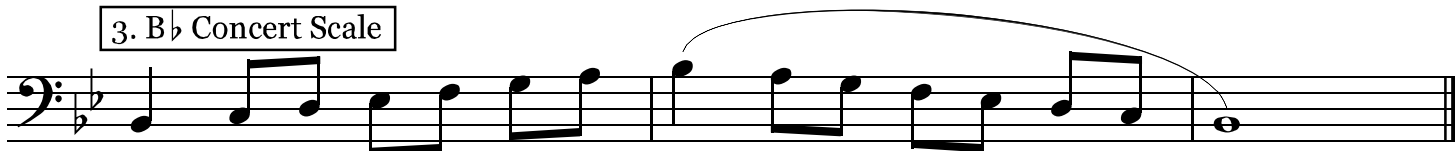
1. C Concert Scale



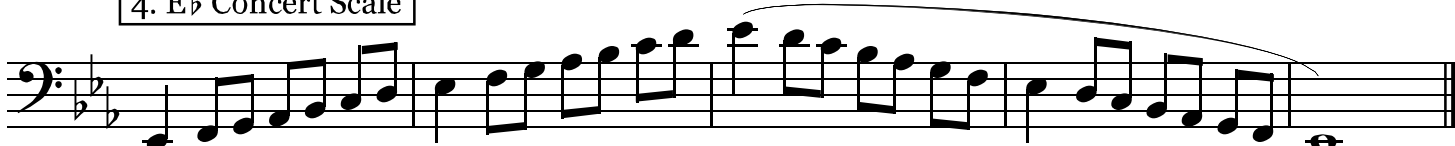
2. F Concert Scale



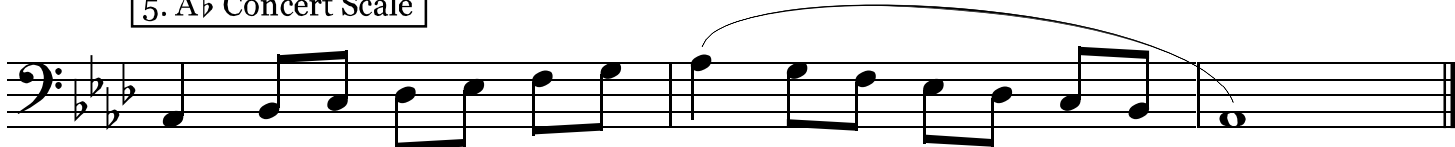
3. B♭ Concert Scale



4. E♭ Concert Scale



5. A♭ Concert Scale



6. Chromatic Scale



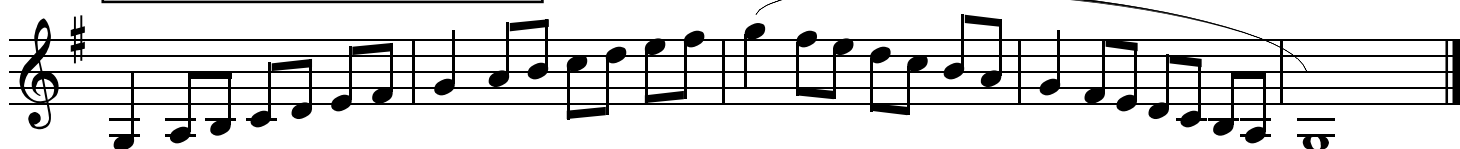
# Region 4 Middle School All-Region Scales

## Bb Clarinet

1. C Concert Scale (written D)



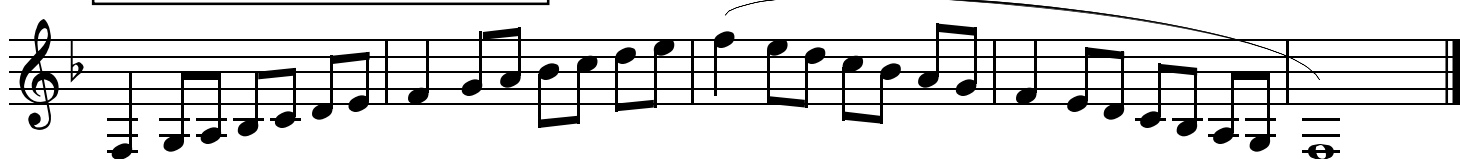
2. F Concert Scale (written G)



3. Bb Concert Scale (written C)



4. Eb Concert Scale (written F)



5. Ab Concert Scale (written Bb)



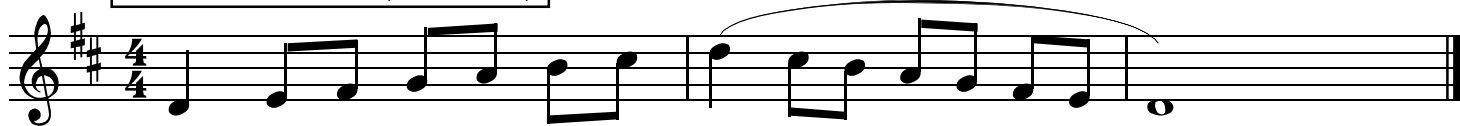
6. Chromatic Scale



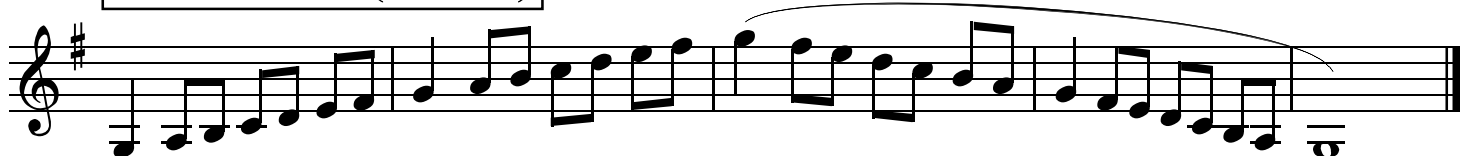
# Region 4 Middle School All-Region Scales

## Bass Clarinet

1. C Concert Scale (written D)



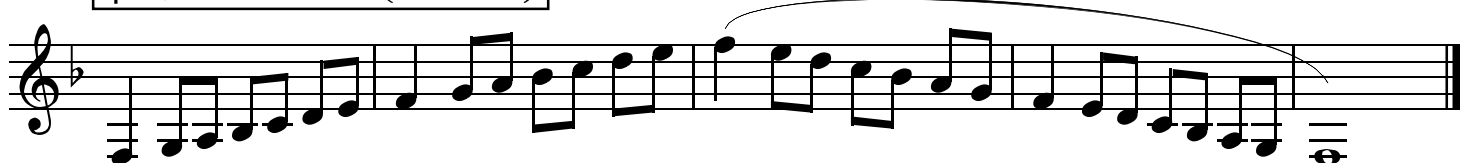
2. F Concert Scale (written G)



3. B $\flat$  Concert Scale (written C)



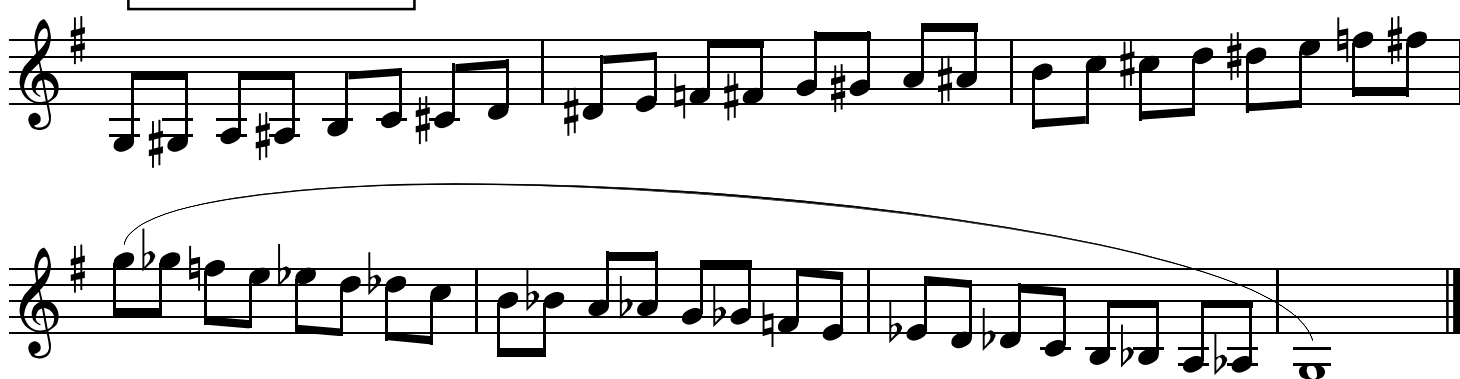
4. E $\flat$  Concert Scale (written F)



5. A $\flat$  Concert Scale (written B $\flat$ )



6. Chromatic Scale



# Region 4 Middle School All-Region Scales

## Alto Saxophone

1. C Concert Scale (written A)

Musical notation for the C Concert Scale (written A) for Alto Saxophone. The scale is written in treble clef with a key signature of three sharps (F#, C#, G#) and a 4/4 time signature. The melody starts on A4 and ascends to A5, then descends back to A4. A slur covers the entire scale.

2. F Concert Scale (written D)

Musical notation for the F Concert Scale (written D) for Alto Saxophone. The scale is written in treble clef with a key signature of two sharps (F#, C#) and a 4/4 time signature. The melody starts on D4 and ascends to D5, then descends back to D4. A slur covers the entire scale.

3. B $\flat$  Concert Scale (written G)

Musical notation for the B $\flat$  Concert Scale (written G) for Alto Saxophone. The scale is written in treble clef with a key signature of one sharp (F#) and a 4/4 time signature. The melody starts on G4 and ascends to G5, then descends back to G4. A slur covers the entire scale.

4. E $\flat$  Concert Scale (written C)

Musical notation for the E $\flat$  Concert Scale (written C) for Alto Saxophone. The scale is written in treble clef with a key signature of one sharp (F#) and a 4/4 time signature. The melody starts on C4 and ascends to C5, then descends back to C4. A slur covers the entire scale.

5. A $\flat$  Concert Scale (written F)

Musical notation for the A $\flat$  Concert Scale (written F) for Alto Saxophone. The scale is written in treble clef with a key signature of one flat (B $\flat$ ) and a 4/4 time signature. The melody starts on F4 and ascends to F5, then descends back to F4. A slur covers the entire scale.

6. Chromatic Scale

Musical notation for the Chromatic Scale for Alto Saxophone. The scale is written in treble clef with a key signature of three sharps (F#, C#, G#) and a 4/4 time signature. The melody starts on A4 and ascends chromatically to A5, then descends chromatically back to A4. A slur covers the entire scale.

Musical notation for the Chromatic Scale for Alto Saxophone. The scale is written in treble clef with a key signature of three sharps (F#, C#, G#) and a 4/4 time signature. The melody starts on A4 and descends chromatically to A3, then ascends chromatically back to A4. A slur covers the entire scale.

# Region 4 Middle School All-Region Scales

## Tenor Saxophone

1. C Concert Scale (written D)



2. F Concert Scale (written G)



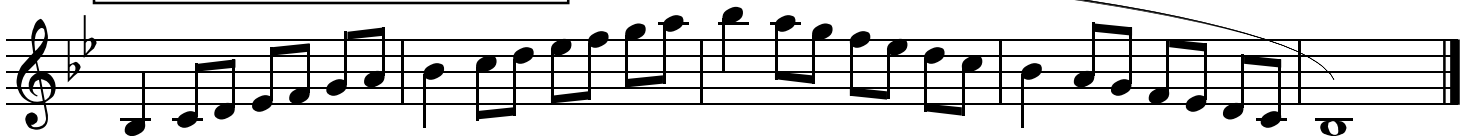
3. B $\flat$  Concert Scale (written C)



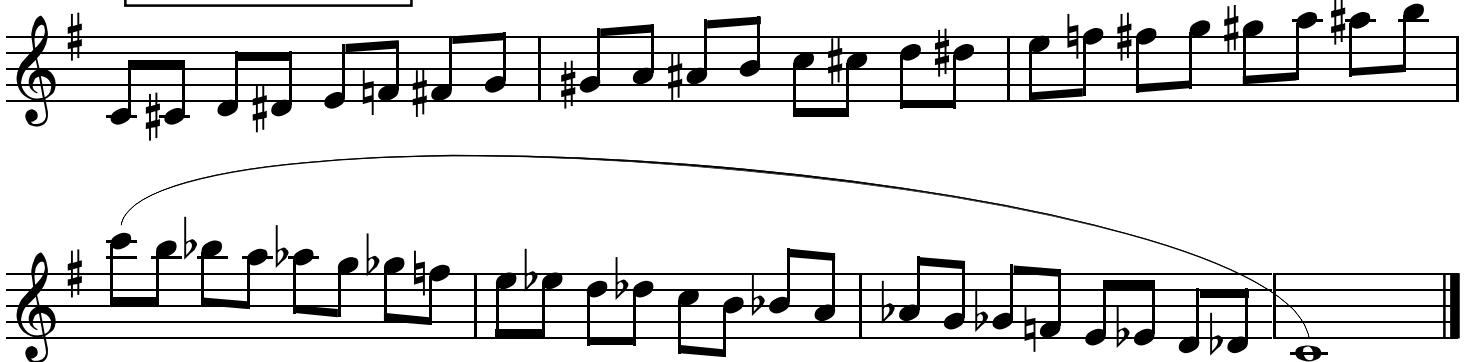
4. E $\flat$  Concert Scale (written F)



5. A $\flat$  Concert Scale (written B $\flat$ )



6. Chromatic Scale



# Region 4 Middle School All-Region Scales

## Trumpet

1. C Concert Scale (written D)



2. F Concert Scale (written G)



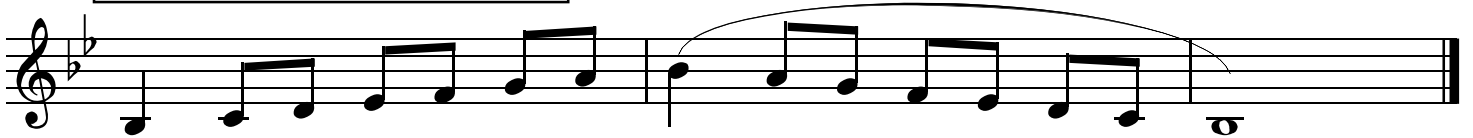
3. B $\flat$  Concert Scale (written C)



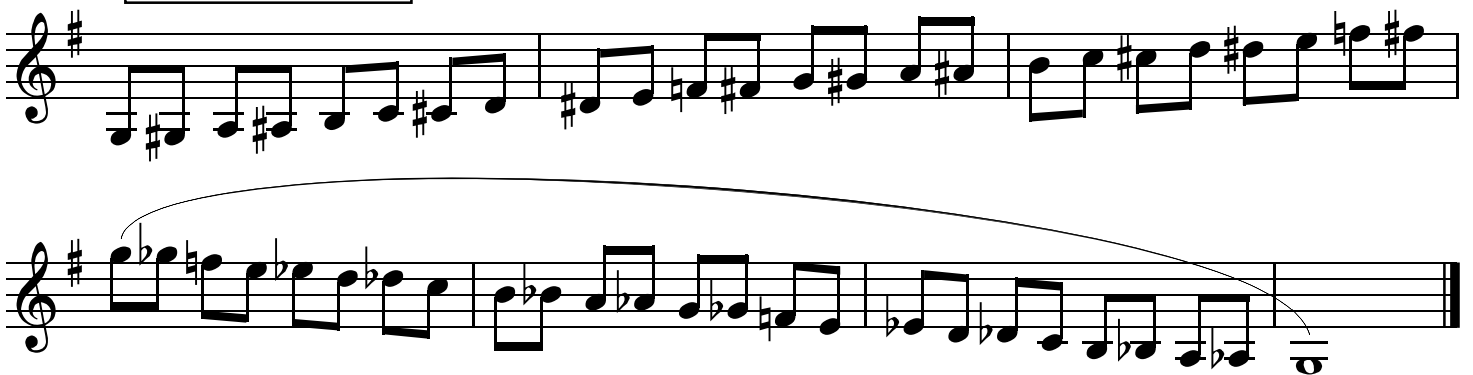
4. E $\flat$  Concert Scale (written F)



5. A $\flat$  Concert Scale (written B $\flat$ )



6. Chromatic Scale





# Region 4 Middle School All-Region Scales

## French Horn

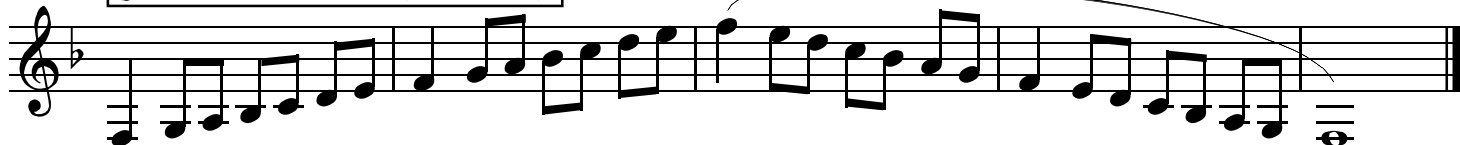
1. C Concert Scale (written G)



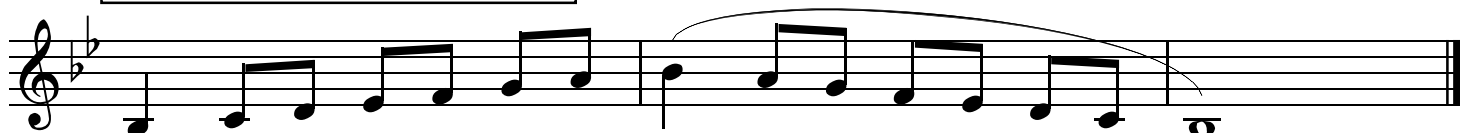
2. F Concert Scale (written C)



3. Bb Concert Scale (written F)



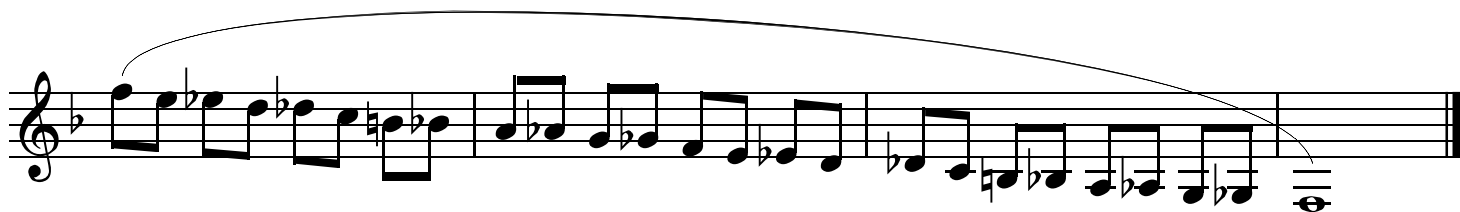
4. Eb Concert Scale (written Bb)



5. Ab Concert Scale (written Eb)



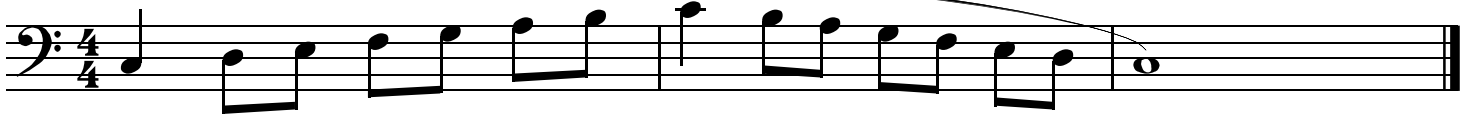
6. Chromatic Scale



# Region 4 Middle School All-Region Scales

## Trombone & Baritone BC

1. C Concert Scale



2. F Concert Scale



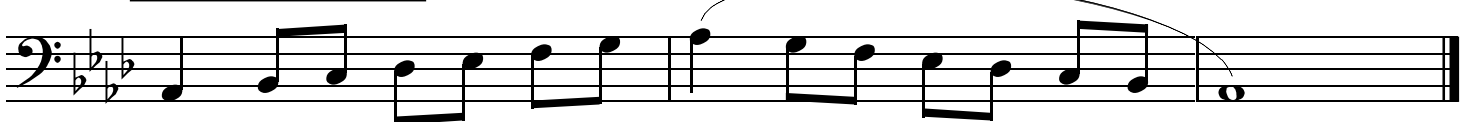
3. B $\flat$  Concert Scale



4. E $\flat$  Concert Scale



5. A $\flat$  Concert Scale



6. Chromatic Scale



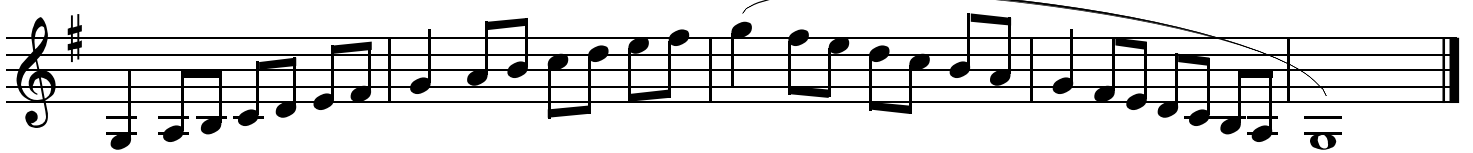
# Region 4 Middle School All-Region Scales

Baritone T.C.

1. C Concert Scale (written D)



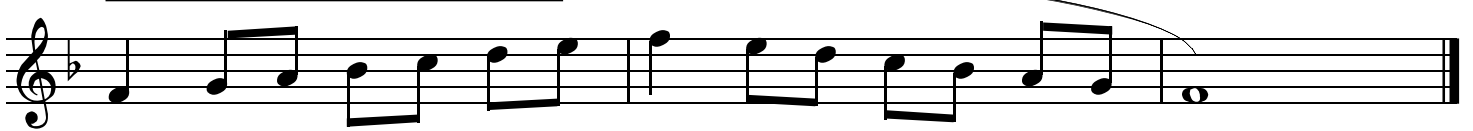
2. F Concert Scale (written G)



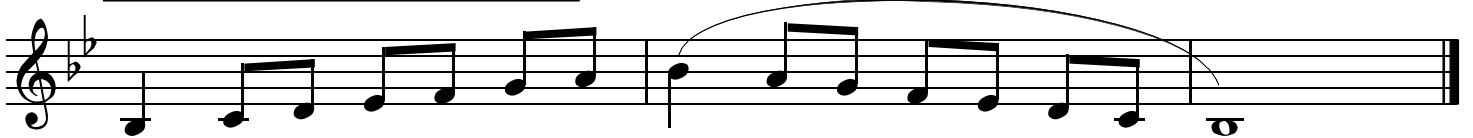
3. B $\flat$  Concert Scale (written C)



4. E $\flat$  Concert Scale (written F)



5. A $\flat$  Concert Scale (written B $\flat$ )



6. Chromatic Scale



# Region 4 Middle School All-Region Scales

Tuba

1. C Concert Scale

Musical notation for the C Concert Scale in bass clef, 4/4 time. The scale is written in a single line, starting on middle C (C4) and ascending to C5. The notes are: C4, D4, E4, F4, G4, A4, B4, C5. The scale is marked with a fermata over the final C5 note.

2. F Concert Scale

Musical notation for the F Concert Scale in bass clef, 4/4 time. The scale is written in a single line, starting on F3 and ascending to F4. The notes are: F3, G3, A3, B3, C4, D4, E4, F4. The scale is marked with a fermata over the final F4 note.

3. B $\flat$  Concert Scale

Musical notation for the B $\flat$  Concert Scale in bass clef, 4/4 time. The scale is written in a single line, starting on B $\flat$ 3 and ascending to B $\flat$ 4. The notes are: B $\flat$ 3, C4, D4, E4, F4, G4, A4, B $\flat$ 4. The scale is marked with a fermata over the final B $\flat$ 4 note.

4. E $\flat$  Concert Scale

Musical notation for the E $\flat$  Concert Scale in bass clef, 4/4 time. The scale is written in a single line, starting on E $\flat$ 3 and ascending to E $\flat$ 4. The notes are: E $\flat$ 3, F3, G3, A3, B3, C4, D4, E $\flat$ 4. The scale is marked with a fermata over the final E $\flat$ 4 note.

5. A $\flat$  Concert Scale

Musical notation for the A $\flat$  Concert Scale in bass clef, 4/4 time. The scale is written in a single line, starting on A $\flat$ 3 and ascending to A $\flat$ 4. The notes are: A $\flat$ 3, B $\flat$ 3, C4, D4, E4, F4, G4, A $\flat$ 4. The scale is marked with a fermata over the final A $\flat$ 4 note.

6. Chromatic Scale

Musical notation for the Chromatic Scale in bass clef, 4/4 time. The scale is written in a single line, starting on F3 and ascending to F4. The notes are: F3, F $\sharp$ 3, G3, G $\sharp$ 3, A3, A $\sharp$ 3, B3, B $\sharp$ 3, C4, C $\sharp$ 4, D4, D $\sharp$ 4, E4, E $\sharp$ 4, F4. The scale is marked with a fermata over the final F4 note.

Musical notation for the Chromatic Scale in bass clef, 4/4 time. The scale is written in a single line, starting on F4 and descending to F3. The notes are: F4, E4, E $\flat$ 4, D4, D $\flat$ 4, C4, C $\flat$ 4, B3, B $\flat$ 3, A3, A $\flat$ 3, G3, G $\flat$ 3, F3. The scale is marked with a fermata over the final F3 note.