

Flute 1

TUEBOR

1. "THE PROMISED LAND"

Set for Concert Band by
ANDREW DAVID PERKINS (ASCAP)

CUT #1

Brisk ♩ = 120, with plenty of lilt

Musical score for "THE PROMISED LAND" featuring two staves of music. The first staff begins with a dynamic marking of *f* and contains a series of eighth-note patterns. A large bracket labeled "CUT #1" spans the first two measures. The second staff continues the melody with a dynamic marking of *f* and includes a "CUT #2" bracket at the end.

2. "SIREN SONGS"

CUT #2

♩ = 60

Musical score for "SIREN SONGS" featuring two staves of music. The first staff begins with a dynamic marking of *mf* and contains a series of eighth-note patterns. A large bracket labeled "CUT #2" spans the first two measures. The second staff continues the melody with dynamic markings of *f* and *mf*, and includes a "rit." marking at the end.

3. "TIMBER!"

CUT #3

♩ = 100

Musical score for "TIMBER!" featuring two staves of music. The first staff begins with a dynamic marking of *f* and contains a series of eighth-note patterns. A large bracket labeled "CUT #3" spans the first two measures. The second staff continues the melody with dynamic markings of *mf* and *f*, and includes a "rit." marking at the end.

MEDITATION

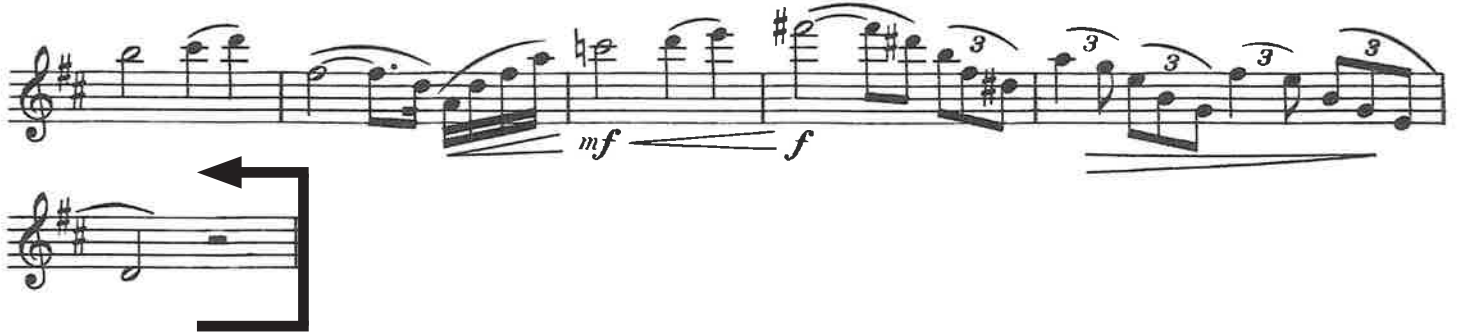
from "Thais"

1st & 2nd C Flutes

MASSNET
arr. by A. A. Harding

Andante religioso

CUT #4



Andante religioso

CUT #5

