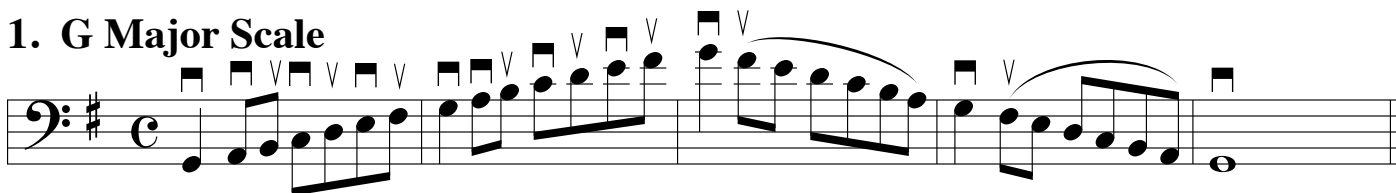


ATSSB Double Bass Scales

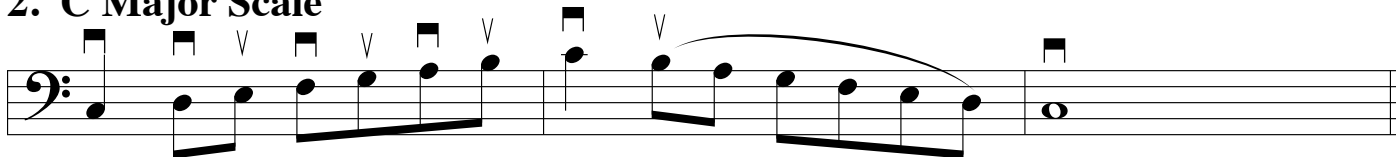
Scales should be performed as written and may or may not be performed connected. All scales are to be played at a minimum of $\text{♩} = 120$.

Scales should be performed in order without delay between scales.

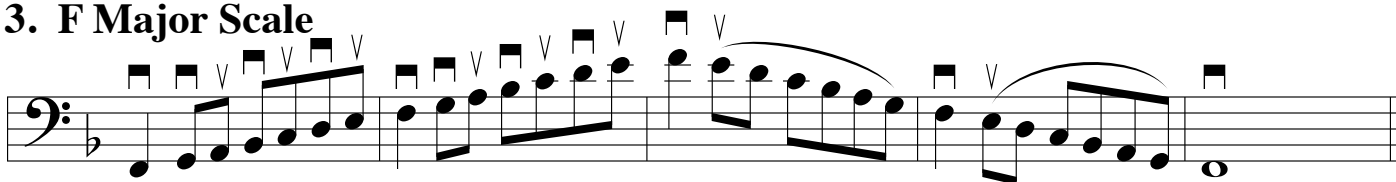
1. G Major Scale



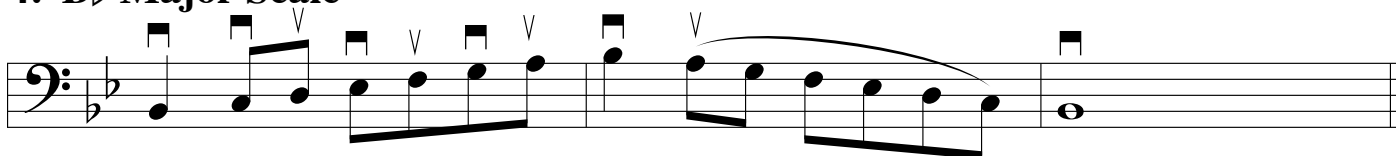
2. C Major Scale



3. F Major Scale



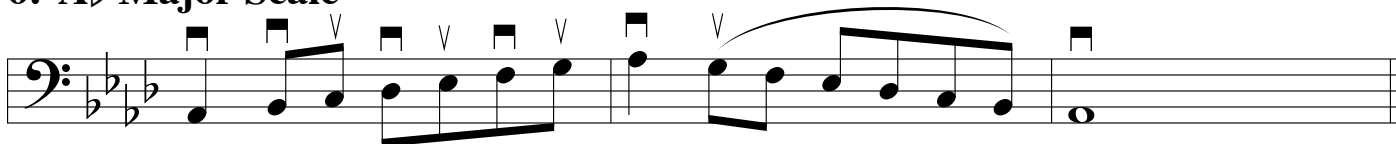
4. B♭ Major Scale



5. E♭ Major Scale



6. A♭ Major Scale



7. D♭ Major Scale



8. Chromatic Scale

